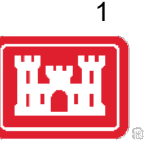


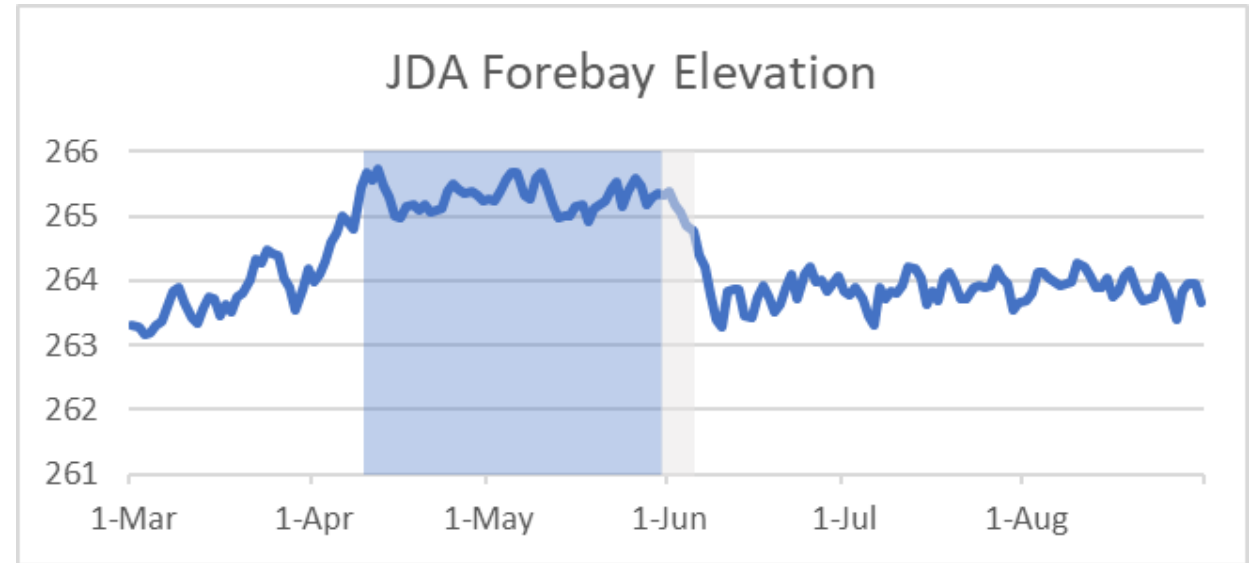


CRS JOHN DAY PREDATOR DISRUPTION OPERATIONS



CRS Action

- Operate John Day Dam forebay
 - Within 264.5 to 266.5 range
 - From April 10 to as late as June 15
- 2022 Operation
 - Operation April 10 to June 5 (light blue)
 - Return to MIP: June 2-5 (light grey)
(262.5-264.5 ft)





CRS JOHN DAY PREDATOR DISRUPTION OPERATIONS

2



Blalock Island Observations – 2022

No Nesting Caspian Terns Observed via flights

Limited low-lying habitat during operation





CRS JOHN DAY PREDATOR DISRUPTION OPERATIONS

3



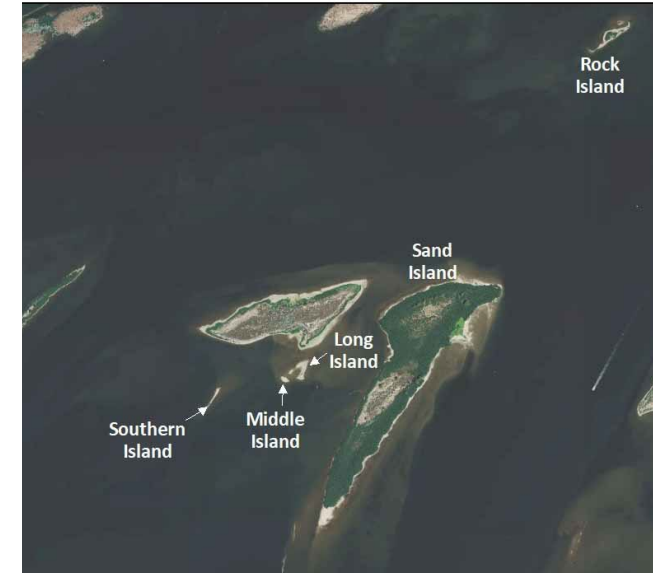
Blalock Island Complex
03 June 2021



South, Middle, Long, and Anvil Islands
13 July 2021



Long and Middle Island
13 July 2021



Unnamed Island
04 May 2021



Unnamed Island
13 July 2021





CRS JOHN DAY PREDATOR DISRUPTION OPERATIONS

4



Other Observations in Vicinity

- Badger Island Incipient Colony
 - Peak ~200 pairs
 - Two nesting areas
- Crescent Island
 - One nesting pair
- Findley Islands
 - Some loafing



Findley Islands
Spring 2021



11/01/2022



INLAND AVIAN PREDATION MANAGEMENT PLAN

5



- Crescent Island
Monitoring (Corps)
- Potholes Reservoir (Bureau of Reclamation)
 - Active & Passive Dissuasion
 - Goose Island & surrounding islets
 - Potholes Reservoir to haze/disrupt tern colony formation
 - Monitoring throughout Potholes Reservoir
- Columbia Plateau Regional Monitoring
 - BPA & GPUD/PRCC
- **CRS Measure – JDA Pool raise to inundate low lying nesting habitat at Blalock Islands





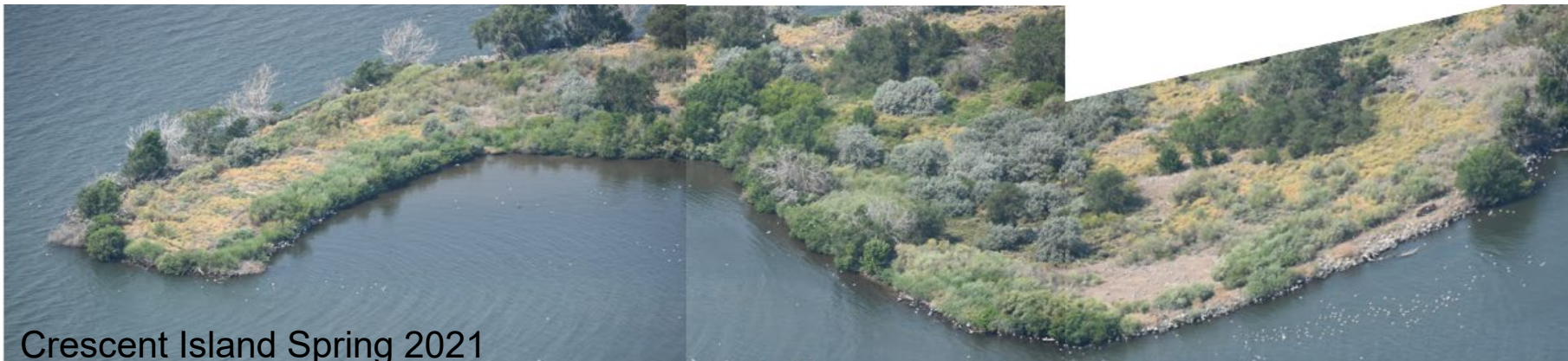
CRS JOHN DAY PREDATOR DISRUPTION OPERATIONS

6



QUESTIONS

Blalock Island Complex
03 June 2021



Crescent Island Spring 2021



CRS JOHN DAY PREDATOR DISRUPTION OPERATIONS



Location	Flight Survey Date						
	4/20/2021	5/4/2021	5/21/2021	6/3/2021	6/15/2021	7/13/2021	8/10/2021
	Nests	Nests	Nests	Nests	Nests	Nests	Nests
Browns Island	0	0	0	0	-	0	0
Island West of Miller Island	0	0	0	0	0	0	0
Islets North of Miller Island	0	0	0	0	0	0	0
Miller Rocks	0	0	0	0	0	0	0
JDA Preacher Island	0	0	0	0	0	0	0
Three Mile Islands	0	0	0	0	-	-	-
<i>Blalock Island Complex (Sum)</i>	<i>13</i>	<i>0</i>	<i>0</i>	<i>0</i>	<i>0</i>	<i>0</i>	<i>0</i>
Straight Six	0	0	0	0	0	0	0
Long, Middle Islands	0	0	0	0	0	0	0
Souther Island	0	0	0	0	0	0	0
Unnamed Island	0	0	0	0	0	0	0
Rock Island	13	0	0	0	0	0	0
Big Blalock	0	0	0	0	0	0	0
Little Blalock	0	0	0	0	0	0	0
Anvil Island	0	0	0	0	0	0	0
Sand Island	0	0	0	0	0	0	0
Blalocks Slough	-	-	0	0	0	0	0
McNary Forebay	0	0	0	0	0	0	0
Crescent Island	0	1	2	1	1	0	0
<i>Badger Island (Sum)</i>	<i>0</i>	<i>85</i>	<i>194</i>	<i>200</i>	<i>128</i>	<i>9</i>	<i>0</i>
Interior Colony	0	85	125	145	102	0	0
Shoreline Colony	0	0	69	55	26	9	0
Remainder of Island	0	0	0	0	0	0	0
Walla Walla Delta	-	-	0	0	-	0	0
Findley Islands	0	0	9	0	0	-	0
Foundation Island	0	0	0	0	0	-	0